

Fire-Resistant Solutions for Wood Frame Construction



MetaBlock® Fire Barrier

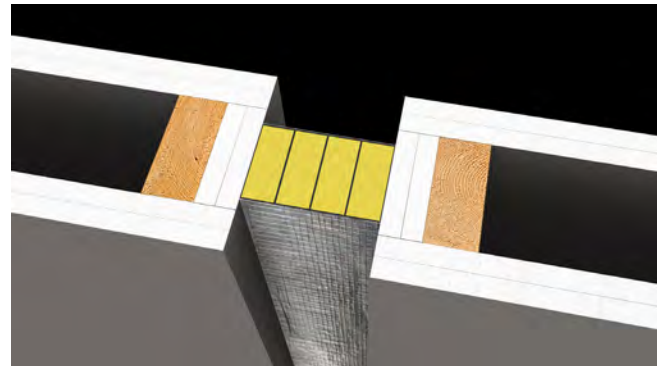


1-Hour Floor Expansion Joints

A UL-listed, 1-hour fire-rated barrier for linear expansion and seismic joints in floor assemblies. Tested to UL 2079 and ASTM E1966, this configuration meets the required performance and movement in wood-frame floor L500 Series conditions.

1 & 2-Hour Wall Expansion Joints

A UL-listed, 1 & 2-hour fire-rated barrier for linear expansion and seismic joints in wall assemblies. Tested per UL 2079 and ASTM E1966, this system supports rated performance and movement in wood-frame wall conditions.



3-Hour Wall Expansion Joints

A UL-listed, 3-hour fire-rated barrier for linear expansion and seismic joints in wall assemblies. Tested per UL 2079 and ASTM E1966, this system supports rated performance and movement in wood-frame wall conditions.

metacaulk® Firestop Solutions



1 to 4-Hour Firestop JOINTS

A series of UL-listed joint assemblies with ratings from 1 to 4 hours intended for head-of-wall, bottom-of-wall, expansion and control joints, and Perimeter and Curtain Wall joints all tested to appropriate UL2079, ASTM E1966, ASTM E2307, UL 263 standards.



Metacaulk® 1200
Sealant & Spray



Metacaulk® Joint Strip
Intumescent Strip



Metacaulk® BlazeFoam
Intumescent Foam



Metacaulk® SAS90
Smoke & Sound

1 to 4-Hour Firestop PENETRATIONS

A series of UL-listed floor and wall assemblies with ratings from 1 to 4 hours intended for through penetrations and membrane penetrations where utilities intersect rated construction.



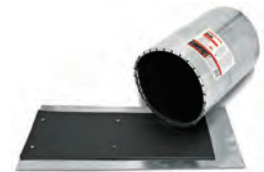
Metacaulk® 150+
Hybrid Multi-purpose



Metacaulk® 1000
Water-based Sealant



Metacaulk® SAS90
Smoke & Sound



Metacaulk® Sleeves
Intumescent Device



Metacaulk® Collars
Intumescent Device



Metacaulk® Pillows
Large Openings

Learn more:

