



## Mounting Solutions

Strong secure support with  
exceptional range

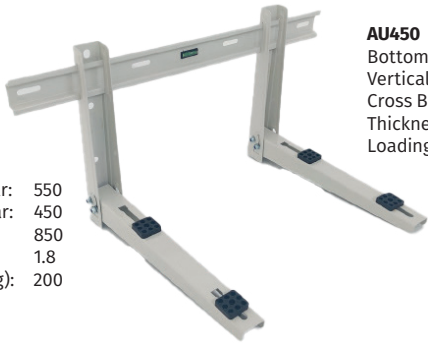


# WALL MOUNTING

## Wall Bracket

Sliding Cross Bar Provides Exceptional Width Range

**AU550**  
Bottom Bar: 550  
Vertical Bar: 450  
Cross Bar: 850  
Thickness: 1.8  
Loading(kg): 200



**AU450**  
Bottom Bar: 450  
Vertical Bar: 350  
Cross Bar: 700  
Thickness: 1.5  
Loading(kg): 100

### FEATURES

- Strong secure support
- Powder coat finish
- Includes level for convenience
- Complete with fasteners, nuts & bolts
- Pre-assembled ready for quick installation

### Max Load Capacity

AU450 - 100kg  
AU550 - 200kg  
AU550-SS - 200kg

### PRODUCT CODES

| Product Code     | Description                    | Qty |
|------------------|--------------------------------|-----|
| 13170 (AU450)    | Wall Bracket – powder coated   | 6   |
| 13171 (AU550)    | Wall Bracket – powder coated   | 4   |
| 13176 (AU550-SS) | Wall Bracket – Stainless Steel | 4   |

**AU550-SS**  
Bottom Bar: 550  
Vertical Bar: 450  
Cross Bar: 850  
Thickness: 1.8  
Loading(kg): 200



AVAILABLE IN  
STAINLESS STEEL

# ROOF MOUNTING

## Roof Bracket

Sliding Cross Bar Provides Exceptional Width Range

**HP049C**  
Length: 1000  
Width: 500  
Supporting Bar1: 500  
Supporting Bar2: 230  
Thickness: 2  
Loading(kg): 200



### FEATURES

- Powder coated finish
- Complete with fasteners, nuts & bolts
- Adjustable angle to suit all applications

### Max Load Capacity

HP049C - 200kg

### PRODUCT CODES

| Product Code   | Description                             | Qty |
|----------------|---|-----|
| 13172 (HP049C) | Adjustable Roof Bracket – powder coated | 4   |



## S-5! HVAC Mounting Kits

Introducing the new HVAC Roof Mounting Kits — engineered for fast, secure installation on Kliplok, Trimdek, and LokSeam type roofs.

**APPLICATION** • Each kit provides a purpose-designed mounting solution that simplifies the process for HVAC technicians, ensuring strength, reliability, and compatibility with Australian roof profiles.



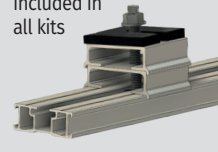
### FEATURES

- Strong secure support
- Includes levelling hardware
- Complete with fasteners, nuts & bolts
- Quick installation

### PRODUCT CODES

| Product Code | Size                     | Quantity |
|--------------|--------------------------|----------|
| S5KLOK       | Kliplok Kit              | 1        |
| S5SLOK       | LokSeam / Snap Lock Kit  | 1        |
| S5TDECK      | Trimdek / Corrugated Kit | 1        |

Levelling hardware included in all kits



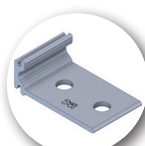
### Required

You will also need Strut Channels (sold separately)



#### KLIPOK KIT

- 4x S-5-K Grip Mini NB
- 4x CF for GRIPPERFIX
- 4x S-5-GXM 10 Inserts
- 4x S-5-GXM 50 Inserts
- 1x GF25K-A GF Leveler kit
- 4x M8 x 40 bolt & Nut for GRIPPERFIX
- 4x M8 x 17 bolt Torx



#### TRIMDEK / CORRUGATED KIT

- 4x EF for GRIPPERFIX (Tab & 2 Screws)
- 1x GF25K-A GF Leveler kit
- 4x M8 x 40 bolt & Nut for GRIPPERFIX
- 4x M8 x 17 bolt Torx



#### LOKSEAM / SNAP LOCK KIT

- 4x S-5-U Mini NB
- 4x CF for GRIPPERFIX
- 1x GF25K-A GF Leveler kit
- 4x M8 x 40 bolt & Nut for GRIPPERFIX
- 4x M8 x 17 bolt Torx



## S-5! Struts

Once you've selected the right kit for your roof type, pair it with 600 mm or 1200 mm struts to complete your professional mounting system.

### PRODUCT CODES

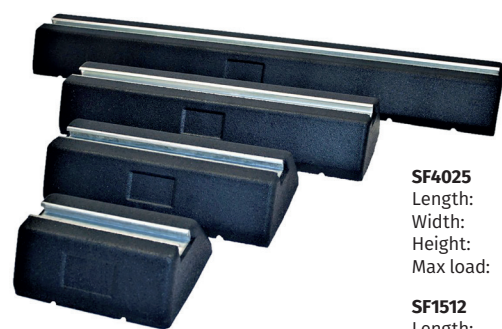
| Product Code | Size   | Set |
|--------------|--------|-----|
| S51200       | 1200mm | 2   |
| S5600        | 600mm  | 2   |



# SURFACE MOUNTING

## StrutFoot

### SBR Recycled Rubber Feet



**SF4025**  
Length: 250  
Width: 180  
Height: 95 mm  
Max load: 160kg

**SF1512**  
Length: 1200  
Width: 130  
Height: 150 mm  
Max load: 645kg

#### FEATURES

- Recycled SBR from truck tyres
- Compatible with Unistrut systems
- Robust and weighted product to reduce product movement on roof
- Pre galvanised channel
- Practical and versatile 6-feet range for pipe work and cable trays
- For smaller outdoor condensing units or air source heat pump installations
- Vibration and noise absorption

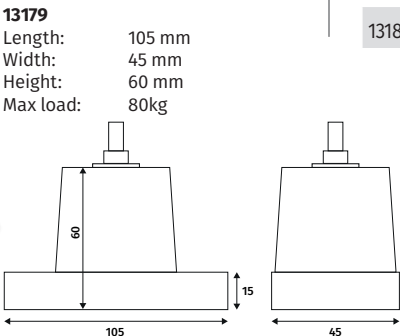
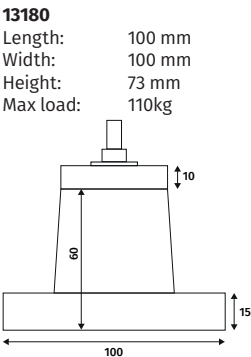
\*Unistrut not included

#### PRODUCT CODES

| Product Code                       | Description                             | Qty |
|------------------------------------|---|-----|
| 13139 (SF4025-SFR 250)             | Rubber Feet Inc Channel 250             | 1   |
| 13140 (SF4040-SFR 400)             | Rubber Feet Inc Channel 400             | 1   |
| 13141 (SF4060-SFR 600)             | Rubber Feet Inc Channel 600             | 1   |
| 13142 (SF4010-SFR 1000)            | Rubber Feet Inc Channel 1000            | 1   |
| 13143 (SF4525-SFR 250 Low)         | Rubber Feet Inc Channel                 | 1   |
| 13144 (SF4540-SFR 400 Low)         | Rubber Feet Inc Channel                 | 1   |
| 13145 (SF1560-SFR 600 High Block)  | Rubber Feet Inc Channel High Block 600  | 1   |
| 13146 (SF1512-SFR 1200 High Block) | Rubber Feet Inc Channel High Block 1200 | 1   |

## Rubber Mounts

### Anti Vibration Rubber Feet Mountings



#### FEATURES

- Set of 4 rubber feet mountings
- Solid rubber construction
- Reduces vibration and noise for AC outdoor units
- Fixed-height design for flat surfaces

#### PRODUCT CODES

| Product Code | Description       | Combined Max Load | Set |
|--------------|-------------------|-------------------|-----|
| 13179        | Rubber Mount 60mm | 320kg             | 4   |
| 13180        | Rubber Mount 73mm | 440kg             | 4   |



## PVC Mount Blocks

### Air Conditioner Support Blocks



**Q350**  
Length: 350  
Width: 105  
Height: 95mm  
NW: 1.1kg  
Loading capacity: 150kg

**Q450**  
Length: 450  
Width: 105  
Height: 95mm  
NW: 1.42kg  
Loading capacity: 150kg



**WQ450**  
Length: 450  
Width: 120  
Height: 75mm  
NW: 0.75kg  
Loading capacity: 150kg

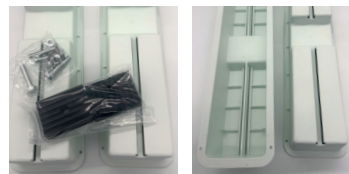
#### FEATURES

- PVC Material
- UV-resistant
- Complete with bolts & nut

\*Each set contains 2 x Mount Blocks

#### PRODUCT CODES

| Product Code  | Description          | Set |
|---------------|----------------------|-----|
| 13173 (Q350)  | PVC Mount Blocks 350 | 1   |
| 13174 (Q450)  | PVC Mount Blocks 450 | 1   |
| 13181 (WQ450) | PVC Mount Blocks 450 | 1   |

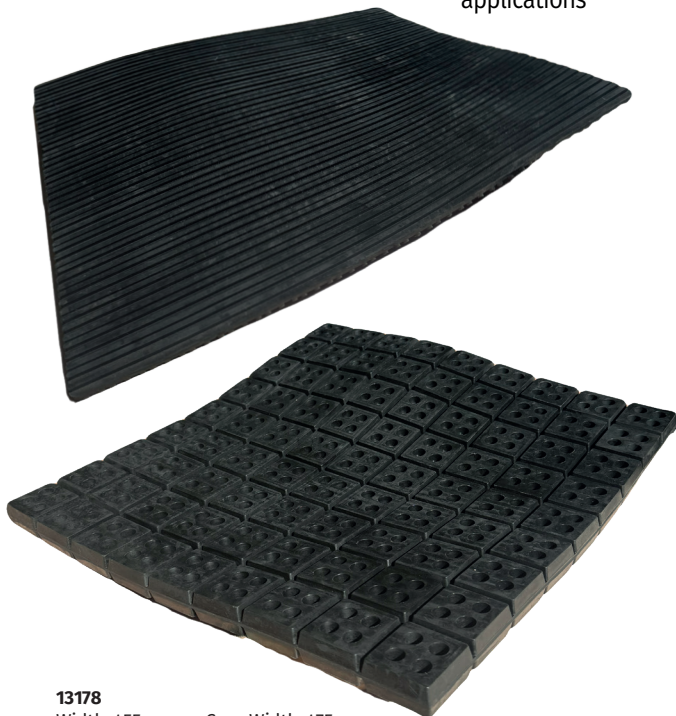


## Waffle Pad

### Anti-Vibration Waffle Pad

**13177**  
Width: 450mm  
Depth: 450mm  
Height: 10mm  
Weight: 2Kg  
Case Width: 460mm  
Case Depth: 460mm  
Case Height: 125mm  
Case Weight: 20Kg

**APPLICATION** • Used for heavy machinery such as air conditioners and pumps • Waffle Pads are used to reduce noise and vibration and to eliminate the need for bolting down • The flat configuration hardly elevates the machine to be isolated and in many cases this low cost method conveniently solves or prevents a problem that does not warrant the use of either rubber or spring mountings • As a general rule, pads are recommended to eliminate bolting, for minor vibration problems in upper stories or for ground floor and non critical applications



**13178**  
Width: 455mm  
Depth: 455mm  
Height: 2mm  
Weight: 4.6Kg  
Case Width: 475mm  
Case Depth: 475mm  
Case Height: 140mm  
Case Weight: 23.1Kg

**RECOMMENDED FOR** • Anti-Vibration Waffle Pad are ideally suited to applications in the air conditioning, refrigeration, irrigation industries due to their resilience and ability to withstand severe operating conditions.

Waffle pads have a grid pattern which make them non-slip, they are also designed to minimize the transmission of shock, noise and vibration caused by machines.

#### FEATURES

- Superior carrying capacity and grip, with a built in anti-contamination seal.
- The grid prevents rib collapse and forms suction pockets for enhanced grip on uneven surfaces.
- Resistant to oils and has superior physical qualities.

#### PRODUCT CODES

| Product Code | Description                    | Qty |
|--------------|--------------------------------|-----|
| 13177        | Waffle Pad 10 (450 x 450 x 10) | 10  |
| 13178        | Waffle Pad 20 (450 x 450 x 20) | 5   |

# PolySlab



## FEATURES

- Australian made
- Made of recycled materials
- Eco-friendly & UV resistant
- Impact resistant & ultralight weight
- Supports all split system air conditioning units
- Stackable design

## Air Conditioner and Equipment Bases

Lightweight universal polymer equipment base for hot water systems • For indoor and outdoor use

**APPLICATION** • Supporting split system air conditioning units and equipment

## DESCRIPTION AND LOAD RATING

| Product Code | Description               | Load Rating |
|--------------|---------------------------|-------------|
| 12905        | 1130 x 650 x 51mm - 6.5kg | 160kg       |
| 12904        | 885 x 465 x 51mm - 2kg    | 160kg       |
| 12903        | 640 x 340 x 51mm - 1.6kg  | 120kg       |

### Underside Ribs

The location, thickness, and depth have been designed to maximise strength.

### Ultra Lightweight

All Polyslab Bases replace heavy, cumbersome, and often fragile pre-cast concrete slabs. Avoid injuries and OH&S litigation with the durable, stylish, lightweight alternative.

### Multiple Channel Supports

Transfer weight of the unit directly to the ground to prevent sinking. The design also allows products to 'lock in' and stack easily for transport.

### Perimeter Support

Combined with the channel supports gives the greatest possible surface area support.



PolySlab is the modern, environmentally responsible alternative to bulky concrete bases. Constructed from 100% recycled materials, PolySlab keeps equipment supported while reducing waste and promoting sustainable building practices. Its lightweight, UV-stable design makes installation simple and safe, while its strength and durability ensure long-term performance around your home or business. Choose PolySlab for a cleaner, greener and smarter foundation for your AC, pump or hot water system.

# ACCESSORIES

## Mighty Bracket™

### Mini-split installation support tool



## Mighty Bracket™

Mini-split Installation Support Tool

### FEATURES

- Allows single person installation
- Simple clip on support
- Does not damage walls
- Use on most brands of mini-splits
- Folds for easy storage
- Includes tote bag



**APPLICATION** • Hook onto mini-split mounting plate to hold mini-split unit securely in place while installing refrigerant lines, condensate line and electrical hookup.

**USER INSTRUCTIONS** • 1. Attach Mounting Hooks of Mighty Bracket to the mini-split mounting plate tabs. (If no tabs are present on the mounting plate, Mighty Bracket hooks can be attached by screws threaded into the wall stud.) 2. Place Foot Supports flat against the wall. (If necessary to avoid potential wall scratching, place clean towel or cardboard between support foot and wall surface) 3. Position Level Adjustment Pins to make Support Arm of the brackets horizontal. 4. Position lift Gates at the end of Support Arms to make sure the unit cannot slide off. 5. Place protective Sleeve Socks over Gates to avoid scratching the unit. 6. Set unit securely onto the top of the Support Arms. 7. Connect refrigerant lines using RectorSeal® NoKink™.\* 8. Connect condensate drain piping and electrical wiring. 9. Carefully lift and place the indoor unit onto top tabs of mounting plate. 10. While ensuring unit does not fall, carefully remove Mighty Bracket and installation is complete.

\* When paired with RectorSeal® NoKink™, Mighty Bracket™ allows simple installation without damaging or kinking copper refrigerant lines.

### PRODUCT CODE

| Product Code | Description             | Qty |
|--------------|-------------------------|-----|
| 97705        | Mini-split support tool | 4   |

## Drain Hose

### Mini-split Condensate Drain Hose



Length: 50m/Roll  
16mm ID / 21mm OD

### FEATURES

- UV-resistant
- 50m Roll
- Cut to length
- Convenient storage carton

### PRODUCT CODES

| Product Code     | Description | Qty |
|------------------|-------------|-----|
| 13175 (GH-7004A) | Drain Hose  | 1   |





A CSW Industrials Company

RectorSeal Australia Pty Ltd. • PO Box 5266 Brendale, Qld 4500 • 1300 77 2878 • [rectorseal.com.au](https://www.rectorseal.com.au)

All information is believed to be current at the time of printing, but our policy is one of continuous development. RectorSeal makes no warranties, express or implied, as to its accuracy. RectorSeal reserves the right to discontinue, update or change the information at any time without notice or without incurring obligations. RectorSeal®, the logos and other trademarks are property of RectorSeal, LLC, its affiliates or its licensors and are protected by copyright, trademark and other intellectual property laws, and may not be used without permission. RectorSeal reserves the right to change specifications without prior notice. ©2025 RectorSeal. All rights reserved.