

Ghost™ condensate pumps for mini-split systems



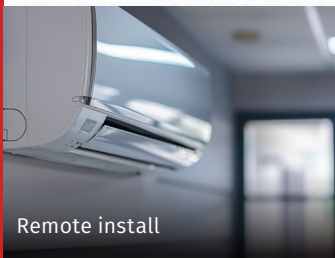
ghost™

- ▶ Quick & easy installation and maintenance
- ▶ Versatile pump positioning
- ▶ Quiet operation

ghost™

MINI-SPLIT PUMP KITS

Don't fear the quiet



Remote install

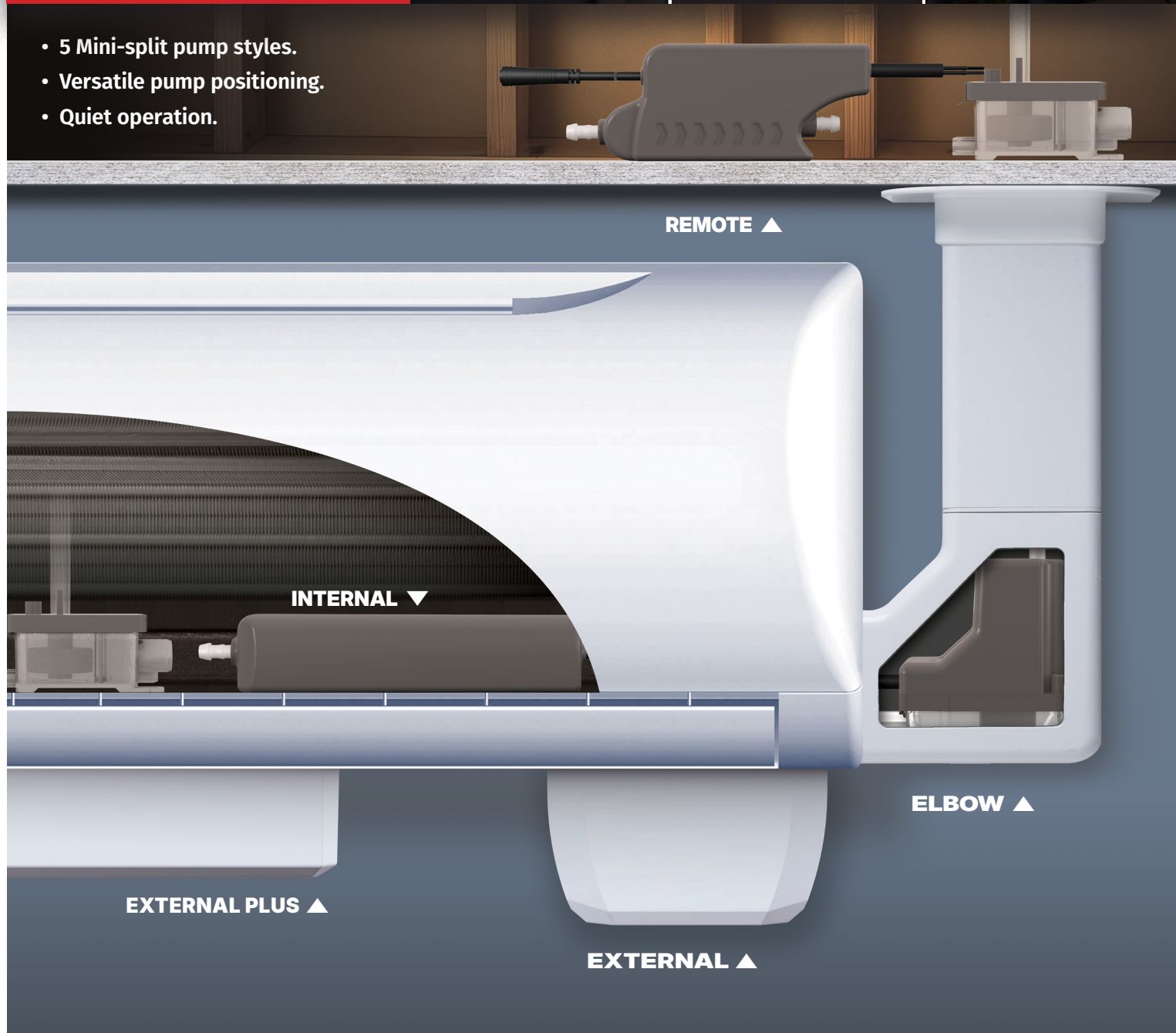


Lineset-mounted



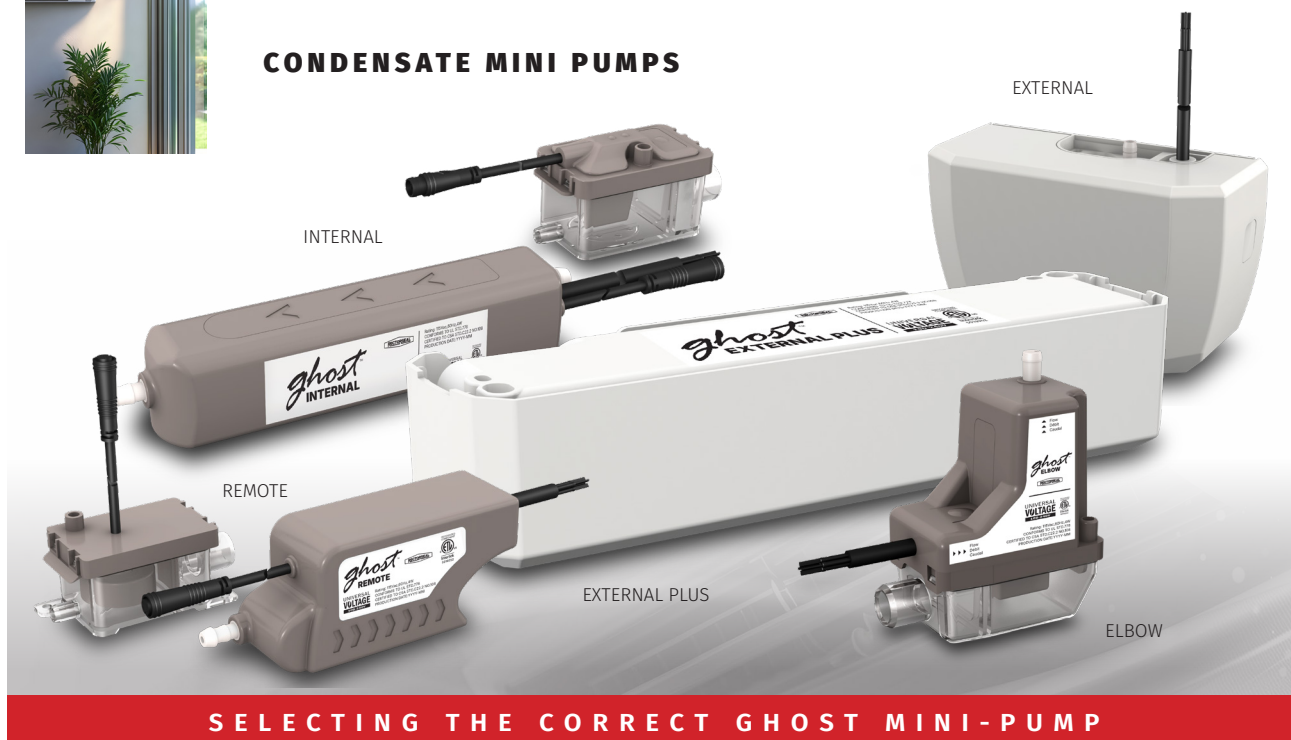
Low-noise performance

- 5 Mini-split pump styles.
- Versatile pump positioning.
- Quiet operation.





CONDENSATE MINI PUMPS



SELECTING THE CORRECT GHOST MINI-PUMP

Five pump models

1. **EXTERNAL PLUS**
2. **EXTERNAL**
3. **INTERNAL**
4. **ELBOW**
5. **REMOTE**

Four considerations

1. **Appearance** - A concealed (INTERNAL) or remote condensate pump (REMOTE) will preserve the attractive nature of any mini-split installation. Surface mounted pumps (EXTERNAL PLUS, EXTERNAL & ELBOW) are neatly covered. All pumps are hidden from view and provide a clean finished appearance.
2. **Quiet Operation** - For best practice, choose a remote pump (REMOTE) installation for the quietest operation in noise sensitive areas.
3. **Ease of Installation** - There's a Ghost pump model for every installation and application. See the guide and chart for options.
4. **Maintenance** - Pump models with filters must be cleaned regularly. Choose a surface type pump (EXTERNAL PLUS, EXTERNAL & ELBOW) for easy filter access.

Two mini-pump types:

1. **Split** - (REMOTE or INTERNAL)
Designed with a separate pump and reservoir, Split models allow for installation flexibility. The pump module contains the motor and electronic PCB, connected to the reservoir by 1/4" ID vinyl tubing and a communication cable. The INTERNAL model utilizes a high-efficiency variable speed pump with a capacitive sensor for solid-state reliability. The REMOTE model utilizes a traditional float switch mechanism; for this unit, the reservoir must remain strictly level and clean for proper float operation. Regular filter maintenance is required for both systems.
2. **Monobloc** - (ELBOW or EXTERNAL)
These systems are designed with both the pump and reservoir as one integral unit, sharing a common body with no need for connecting tubes or wiring. The pumps are cooled and lubricated by the water flowing through them. The External Plus and Elbow models feature a variable speed motor controlled by a capacitive sensor. The standard External model utilizes a mechanical float switch to detect the presence of water in the drain pan and activate the pump.

Ghost Pumps features:

- Quick and easy to install
- Mini Pumps fit mini-splits up to 157,000 BTU/hr
- Rotary diaphragm pumps that can run dry
- EXTERNAL, PLUS, INTERNAL, and ELBOW utilizes an adaptive capacitance sensor for operation. EXTERNAL REMOTE operate using a traditional float to sense the water level.
- Dry contact for overflow protection
- Cleanable filters
- Ultra Quiet - 16dB(A) to 20dB(A)
- Thermally protected
- Maximum water temperature 158°F
- Discharge hose 1/4" ID
- Kits include all components required
- 1 amp fuse included (must be installed to validate the warranty)

NOTE: Sound level and pump performance varies with voltage and frequency.





CONDENSATE MINI PUMPS

Ghost™ External Plus

Ultra slim, ultra quiet new generation model

RECOGNIZED
COMPONENT



Code	Model	Power Supply	Power Consumption	Ctn. Wt.	Qty
83930	EXTERNAL PLUS	Univolt	<4w	1.59lbs	1

FEATURES

- Rotary diaphragm
- Capacitance technology: Soft start and variable flow; pump speed optimized in response to flow rate
- Ultra quiet operation
- Low profile design allows installation above a door
- Discreet: Pump designed to be positioned within high wall unit shadow line
- Neutral design complements leading manufacturers' high wall units
- Easy installation: Optional easy fit installation insert provided
- Reversible: Position inlet left or right for installation flexibility
- Fully potted electronics
- Includes anti-siphon device

SPECIFICATIONS:

Power supply: 100-240V AC 50/60Hz

Capacity: 10.6GPH @ 0' Head / 3.6GPH @ 39.4' Head

Max. discharge head: 39.4ft (12M)

Max. suction lift: 6.6ft (2M)

Max. unit output: 157,000 Btu/h / 46kw

Safety switch: 3A Normally closed

Max. water temperature: 104°F

Discharge tube: 1/4" ID

Protection: Fully potted, IP-45

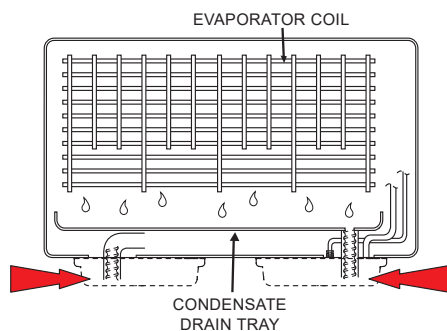
Sound level: 16dB(A)@ 3.3ft (1M)

Pump Dimensions:

11.1" × 2.2" × 2.7"

Class II Appliance

TYPICAL PUMP LOCATIONS





CONDENSATE MINI PUMPS

Ghost™ External

Mounts directly below evaporator, quick installation

RECOGNIZED
COMPONENT



Intertek

Code	Model	Power Supply	Power Consumption	Ctn. Wt.	Qty
83939	EXTERNAL	Univolt	<4W	1.3lbs	1

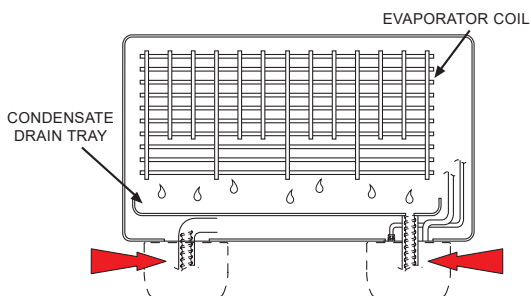
FEATURES

- Rotary diaphragm
- Surface mounts below evaporator, at either end
- Crisp white color and slim profile complement any evaporator
- Resilient mounting minimizes vibration & noise
- Accepts standard 5/8" drain hose from any mini-split
- Fully potted electronics
- No need to disturb evaporator to clean filter, reservoir clips out from front for easy removal and replacement
- Includes anti-siphon device

SPECIFICATIONS:

Power supply: 100-240V AC 50/60Hz
Capacity: 10.6GPH @ 0' Head / 3.6GPH @ 32.8' Head
Max. discharge head: 32.8ft (10M)
Max. unit output: 157,000Btu/h / 46kw
Max. water temperature: 158°F
Water Storage: 7.8oz
Discharge tube: 1/4" ID
Rated: Continuous
IP Protection: IPX5
Fully potted: Yes
Safety switch: 3A Normally closed
Sound level: 20dB(A) @3.3ft (1M)
Pump Dimensions:
 6.5" x 2.7" x 4.2"
 Class II Appliance

TYPICAL PUMP LOCATIONS





CONDENSATE MINI PUMPS

Ghost™ Internal

Ultra-slim profile, fits inside evaporator or lineset cover

RECOGNIZED
COMPONENT



Intertek

Code	Model	Power Supply	Power Consumption	Ctn. Wt.	Qty
83809	INTERNAL	Univolt	<4W	1.37lbs	1

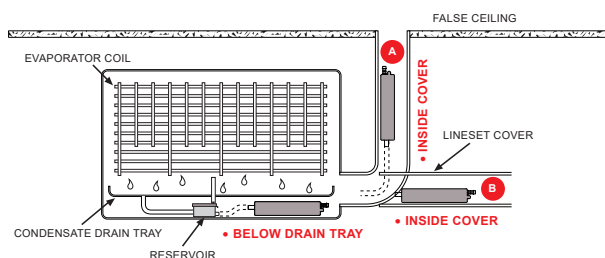
FEATURES

- Self Priming
- Integral hanging loop and separate reservoir facilitates attachment in vertical applications
- Ultra-slim profile
- Installs within evaporator or inside lineset cover
- 3A NC dry contacts
- Modular terminals for fast connection
- Inline fuse
- Fully potted electronics
- Includes anti-siphon device

SPECIFICATIONS:

Power supply: 100-240V AC 50/60Hz <4W
Capacity: 10.6GPH @ 0' Head / 3.6GPH @ 39.4' Head
Max. discharge head: 65.6ft (20M)
Max. suction lift: 39.4ft
Max. unit output: 157,000 Btu/h / 46kw
Max. water temperature: 104°F
Safety switch: 3A Normally closed
Discharge tube: 1/4" ID
Protection: Fully potted, IP-45
Sound level: 16dB(A)@ 3.3ft (1M)
Pump Dimensions:
 7.3" × 1.4" × 1.3"
 Class II Appliance

TYPICAL PUMP LOCATIONS





CONDENSATE MINI PUMPS

Ghost™ Remote

Installation flexibility, proven reliability

RECOGNIZED
COMPONENT



Code	Model	Power Supply	Power Consumption	Ctn. Wt.	Qty
83909	REMOTE	Univolt	<4W	1.57lbs	1

FEATURES

- Rotary diaphragm
- Pump installs remotely above ceiling
- Pan mount and inline style reservoir included
- Modular terminals for fast connection
- Gravity Inlet
- Fully potted electronics
- 3A NC dry contacts
- Includes anti-siphon device

SPECIFICATIONS:

Power supply: 100-240V AC 50/60Hz <4W

Capacity: 10.6GPH @ 0' Head / 3.6GPH @ 32.8' Head

Max. discharge head: 32.8ft (10M)

Max. suction lift: 6.6ft (2M)

Max. unit output: 157,000 Btu/h / 46kw

Max. water temperature: 158°F

Safety switch: 3A Normally closed

Discharge tube: 1/4" ID

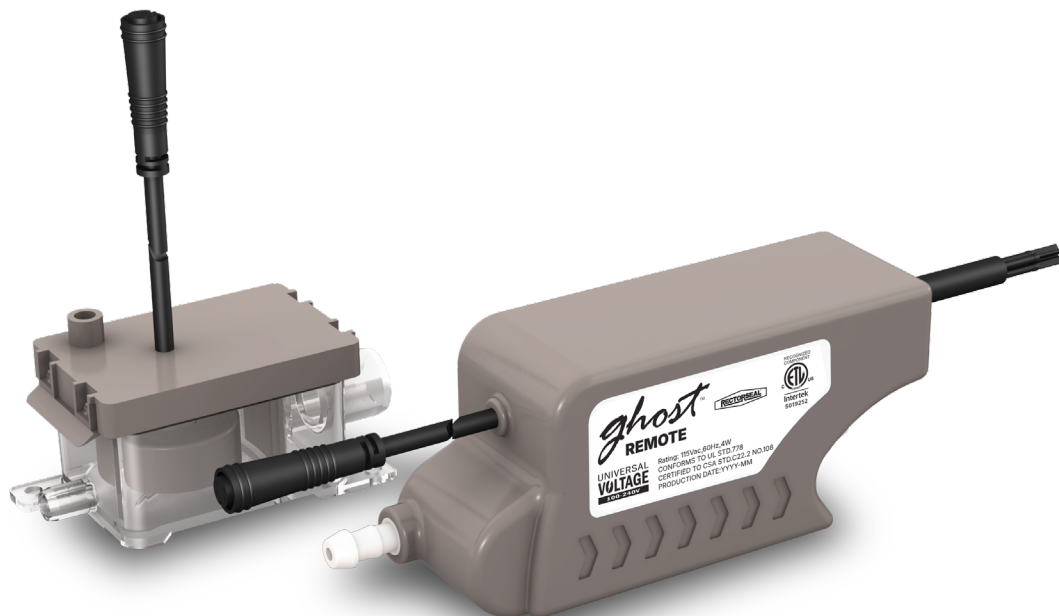
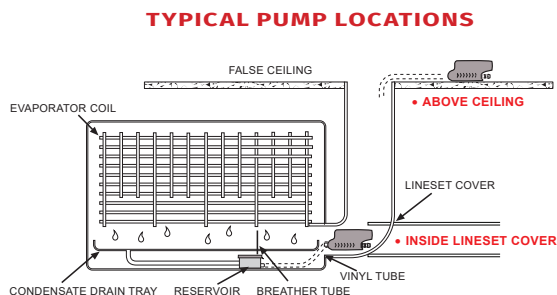
Protection: Fully potted, IP-45

Sound level: 16dB(A)@ 3.3ft (1M)

Pump Dimensions:

4.9" x 1.5" x 1.9"

Class II Appliance





CONDENSATE MINI PUMPS

Ghost™ Elbow

Elbow design, reversible, duct included options available

RECOGNIZED
COMPONENT



Code	Model	Power Supply	Power Consumption	Ctn. Wt.	Qty
83869	ELBOW	Univolt	<4W	1.06lbs	1

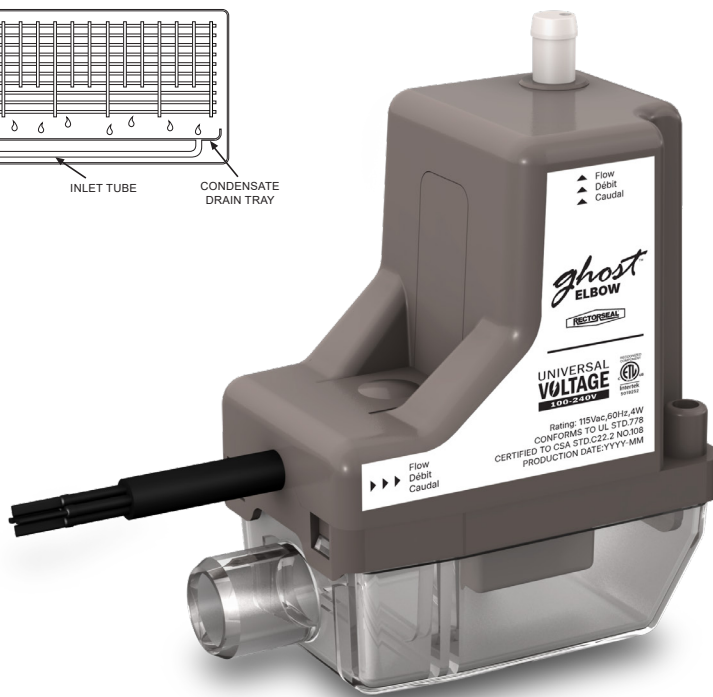
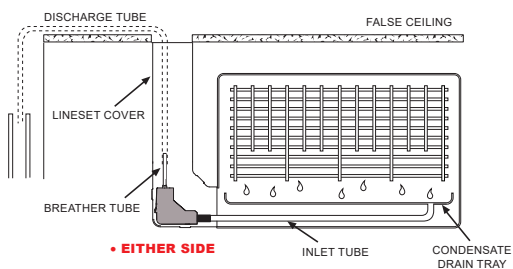
FEATURES

- Rotary diaphragm
- Capacitance technology: Soft start and variable flow;
- pump speed optimized in response to flow rate Left or right install
- Easily accessed for filter cleaning
- 3A NC dry contacts rated
- Fully potted electronics
- Includes anti-siphon device

SPECIFICATIONS:

Power supply: 100-240V AC 50/60Hz
Capacity: 4.8GPH @ 0' Head / 1.3GPH @ 32.8' Head
Max. discharge head: 32.8ft (10M)
Max. suction lift: 6.6ft (2M)
Max. unit output: 54,600 Btu/h / 16kw
Max. water temperature: 104°F
Safety switch: 3A Normally closed
Discharge tube: ¼" ID
Protection: Fully potted, IP-45
Sound level: 17dB(A)@ 3.3ft (1M)
Pump Dimensions: 3.2" × 1.8" × 3.8"
 Class II Appliance

TYPICAL PUMP LOCATIONS



ghost™

PUMP SELECTOR GUIDE



Prior to installation calculate condensate production of indoor evaporating coil to confirm suitability of condensate pump in application.

Electrical

Univolt Model	•	•	•	•	•
Overflow Switch	•	•	•	•	•

Mounting

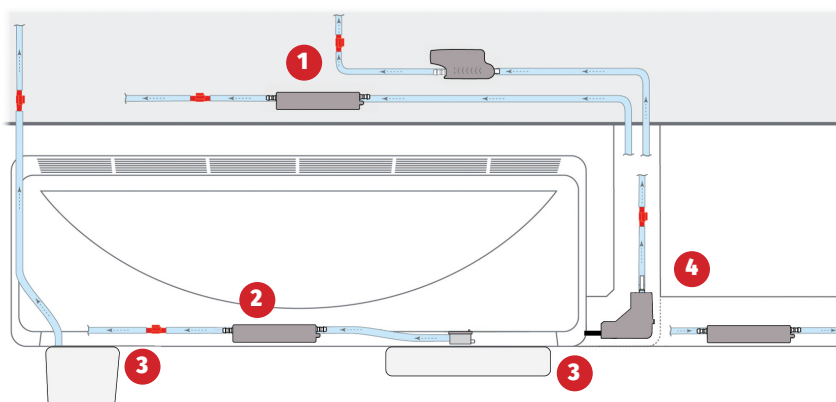
Surface Mount	•	•	•	•	•
Concealed in Evaporator	•	•	•	•	•
Concealed in Lineset Cover	•	•	•	•	•
Remote Pump Install (ideal for noise sensitive areas)	•	•	•	•	•
Easy Filter Access	•	•	•	•	•
Lineset Duct Kit included	•	•	•	•	•

General

Inline Reservoir Included (5/8 inlet)	•	•	•	•	•
Drain Pan Mounted Reservoir Included (OPTIONAL FOR DUCTED SYSTEMS)	•	•	•	•	•
Integral Reservoir on Pump	•	•	•	•	•

For more detailed selection information, visit rs.today/ghost-pumps

83939 EXTERNAL PLUS
83930 EXTERNAL
83809 INTERNAL
83909 REMOTE
83869 ELBOW



Type 1 Installation

For optimum quiet operation, the solution is a remote mounted pump. **INTERNAL, REMOTE**

Type 2 3 Installation – rear entry lineset

Lineset enters the evaporator from directly behind.

EXTERNAL, EXTERNAL PLUS – Pump assembly mounts on wall surface below the evaporator (easy filter access).

INTERNAL – Both pump and reservoir mount inside of evaporator, below the drain pan.

Type 4 Installation – exposed straight lineset

Lineset enters the evaporator from either side, extending horizontally to outside wall.

INTERNAL – Pump mounts outside the evaporator hidden inside horizontal lineset cover. Reservoir mounts inside of evaporator, below the drain pan.

Type 4 Installation – side entry lineset

Lineset enters the evaporator from either side, turns 90 degrees up into the ceiling and is completely concealed by lineset cover (included in kit).

ELBOW – Pump assembly mounts outside the evaporator, behind easy to remove elbow cover. Transparent reservoir clips off pump for easy filter access.

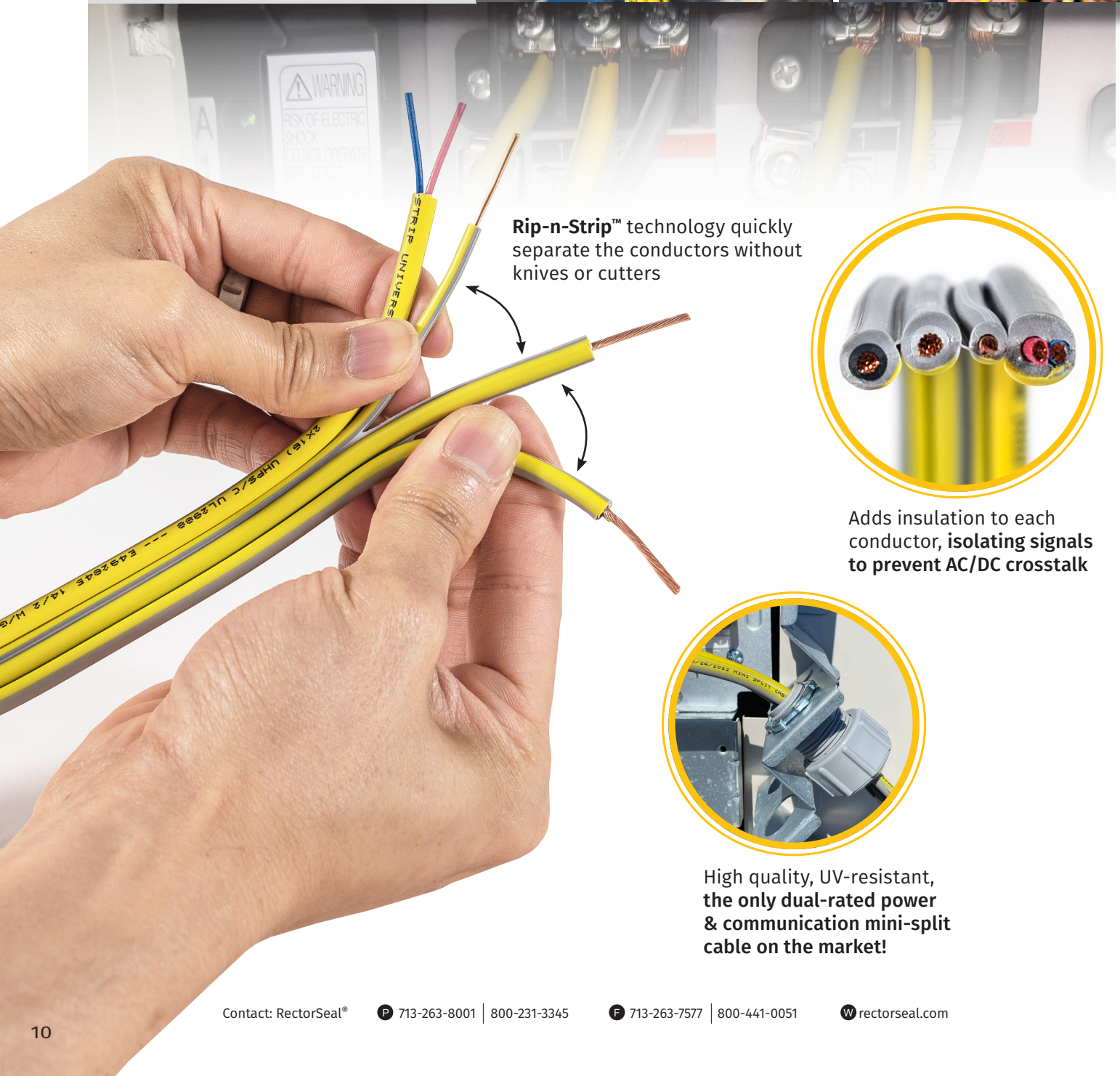
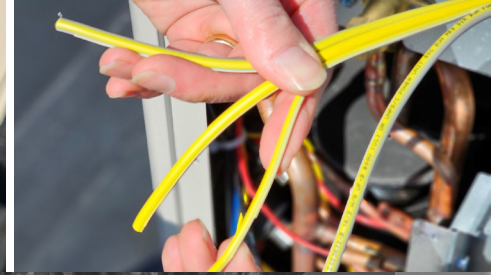
Scan this QR code for
Mini Pumps Wiring
Diagrams





MINI-SPLIT CABLE

All in one. Code compliant.



Rip-n-Strip™ technology quickly separate the conductors without knives or cutters



Adds insulation to each conductor, **isolating signals to prevent AC/DC crosstalk**



High quality, UV-resistant, **the only dual-rated power & communication mini-split cable on the market!**



MINI-SPLIT CABLE

Duckt-Strip®

Rip-n-Strip Ductless Mini-Split Cable

Code	Description	Qty
DUCKTSTRIPUNV100	Universal 5/4, 2x14, 2x16 100' coils	1
DUCKTSTRIPUNV250	Universal 5/4, 2x14, 2x16 250' coils	1
DUCKTCONNPKUNI	Universal Connector	200

FEATURES

- All-in-one mini-split cable, streamlining connection between indoor and outdoor units
- One wire covers interior/exterior compliance
- Innovative Rip-n-Strip™ technology with no blade required
- High-grade materials for durability and reliability
- Combines power, communication, and control wires
- UV-resistant outer jacket
- Enhanced flexibility for easy routing
- Color-coded wires for simplified connections
- Universal connector available for outdoor applications
- Code-compliant

APPLICATION

• The all-in-one mini-split cable designed to simplify and streamline ductless HVAC installations • The patented Rip-n-Strip technology allows for safe separation of individual wires within the cable, eliminating the need for additional cutting tools • Combines power, communication, and control wires in a single, easy-to-install cable • UV-resistant jacket ensures long-lasting performance in outdoor applications • Enhanced flexibility allows for effortless bending and routing in tight spaces

RECOMMENDED FOR

• From the mini-split outdoor condensing unit to the indoor unit. Power and Control in one cable.



Fittings

For mini-split installation



PIPE ADAPTER

Code	ID	Length	Ctn Qty	Ctn Wt
83031 (DSH-14C) INSULATED	–	–	10	2 lbs.
Joins DSH-14 insulated drain hose to A/C drain pipe				



PIPE ADAPTER

Code	ID	Length	Ctn Qty	Ctn Wt
83020 (DSH-14-16V) DSH-14 Hose to 3/4 PVC	3/4 in	–	10	2 lbs.
83024 (DSH-20-NV) DSH-20 Hose to 3/4 PVC	3/4 in	–	10	2 lbs.



WALL SLEEVE

Code	Size	Ctn Qty	Ctn Wt
83017 (NFP-75) WALL SLEEVE	3"x 5" – 7"	10	1 lb.



NON-ADHESIVE WRAP

Code	Size	Ctn Qty	Ctn Wt
83016 (HN-75-l) non-adhesive wrap	3" x 70'	80	38.58 lb.
Protects against UV exposure			



MINI-SPLIT CONDENSATE DRAIN HOSE

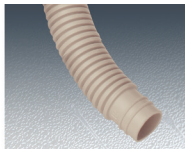
Condensate Drain Hose

Non-Insulated

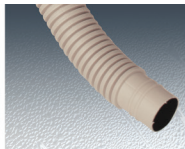
Code	ID	Length	Ctn Qty	Ctn Wt
83001 (DH-14) STANDARD	1/2 in	164 ft	1	6 lbs.
83002 (DH-16) STANDARD	5/8 in	164 ft	1	7 lbs.
83003 (DH-16S) STANDARD	5/8 in	20 ft	5	6 lbs.
83004 (DHQ-16) UV RESISTANT	5/8 in	164 ft	1	6 lbs.
83005 (DSB-16) SMOOTH BORE	5/8 in	65 ft	1	2 lbs.



Non-Insulated



UV Resist



Smooth Bore



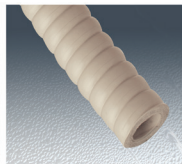
Smooth Bore (DSB-16)
Reduces resistance and maximizes condensate flow. Resists clogging.

UV Resistance (DHQ-16)
Resists deterioration from sunlight.

Condensate Drain Hose

Insulated

Code	ID	Length	Ctn Qty	Ctn Wt
83011 (DSH-14)	1/2 in	65 ft	1	7 lbs.
83012 (DSH-20N)	3/4 in	65 ft	1	10 lbs.
83013 (DSH-25N)	1 in	65 ft	1	13 lbs.



Insulated



Insulated
Protects hose from sweating that can occur from cooler condensate and warmer ambient air.

Condensate Drain Hose

Insulated Drain-up Hose Kit

Code	Description	Qty
84306	DSH-UP20E20E-07 Elbow to Elbow 27.5"	10
84307	DSH-UP20E20E-10 Elbow to Elbow 40"	10
84308	DSH-UP20E20S-07 Elbow to Straight Coupler 27.5"	10
84309	DSH-UP20E20S-10 Elbow to Straight Coupler 40"	10

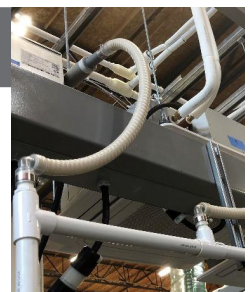
FEATURES

- Exclusive hose for drain-up piping
- Easy to adjust position
- Pre-connected hose with fittings

APPLICATION • Drain-up hose kit for indoor A/C unit. These insulated drain hoses will greatly reduce install time, since there is no need to cut and cement plastic pipes for the drain assembly.

RECOMMENDED FOR

- Exclusive for indoor use • Commercial HVAC units
- Ceiling cassette • Ducted concealed





A CSW Industrials Company

HVAC DIVISION

RectorSeal provides industry-leading digital and print support materials for its extensive chemical and mechanical solutions that include:

- Technical Product Information
- Marketing Support Materials
- Engaging Product Demonstration Videos
- Informative SDS and Product Data Sheets
- On-demand and Live Training and Webinars
- Learning Management System (LMS) support via RectorSeal Academy
- Informative Distributor and Sales Representative Tools
- Industry-related Tradeshow and Events Information

For complete details, visit www.rectorseal.com

For the latest product enhancements, news, and updated information, please follow RectorSeal's social media channels.



facebook.com/rectorseal



linkedin.com/company/rectorseal



x.com/rectorseal



instagram/rectorseal



youtube.com/rectorsealcorp

All information is believed to be current at the time of printing, but our policy is one of continuous development. RectorSeal makes no warranties, express or implied, as to its accuracy. RectorSeal reserves the right to discontinue, update or change the information at any time without notice or without incurring obligations.

RectorSeal® • 2601 Spenwick Drive, Houston, TX 77055, USA • 713-263-8001 • rectorseal.com

RectorSeal®, the logos and other trademarks are property of RectorSeal, LLC, its affiliates or its licensors and are protected by copyright, trademark and other intellectual property laws, and may not be used without permission. RectorSeal reserves the right to change specifications without prior notice. ©2026 RectorSeal. All rights reserved. R51333 251216